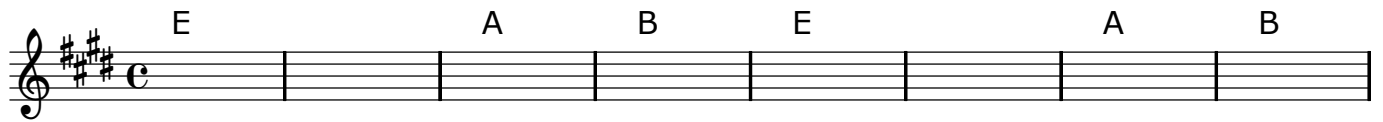


Follow The Signs

Words & Music by
Nathan Creek
nate@deepcreek.org.au

♩ = 134



1. When we come in - to this life and start a - long a jour-ney,
2. Some-thing new round eve - ry turn with all the diff-erent choi-ces.



Slow - ly gain-ing ex - per - ie - nce to help us on the way,
Learn-ing les-sons from what I've done and things that I have found.



As a chi - ld there is lots to see. All the love and pain and my-
If I'm travelling on a bum-py road, or I'm ca - rry - ing a hea-



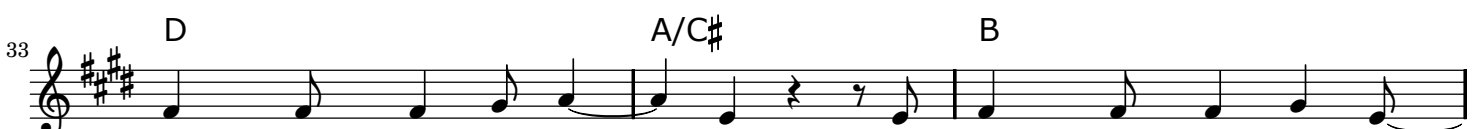
ste - ry Could I find an ans - wer to ex-plain?
vy load, if I lift my head and look a - round,



Chorus. Where-ev-er I turn my head and op - en my eyes, I see the



won-der and the beau-ty of this world that you in-spired. I



know you're walk - ing with me. I know you're in my heart.

36 C#m E/G# A B C#m A B

You're always with me guid - ing me. If I just follow the signs.

43 E A B E A B

51 E A B

3. As I'm walk - ing through this life I will tra - vel ov - er

55 E D A/C# B

hills and val - leys and cross the plains, the wide and nar - row ways. Every

59 C#m A C#m A D

now and then I will ascend to a mountain top experience. It's easy to see why

64 D B^{sus4} B F#m B^{sus4} B

I'd want to stay. but if I travel on, then on my way

71 B A B E

Chorus. Where - ev - er I turn my head and op - en my eyes, I see the

76 A B^{sus4} B

won - der and the beau - ty of this world that you in - spired. I

80 D A/C# B

know you're walk - ing with me. I know you're in my heart.

83 C#m E/G# A B C#m

You're al - ways with me guid - ing me.

88 C#m A B E

Where-ev-er I turn my head and op - en my eyes, I see the

93 A B^{sus4} B

won-der and the beau-ty of this world that you in-spired. I

97 D A/C# B

know you're walk - ing with me. I know you're in my heart.

100 C#m E/G# A B^{sus4} B C#m B/D#

You're al-ways with me guid-ing, al-ways with me guid-

105 E E/G# A B A/C# D^{sus2} D A

- ing, al-ways with me guid - ing me. If I just fol - low

111 B^{sus4} B E A B E A B E

the signs.